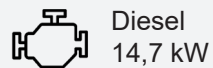




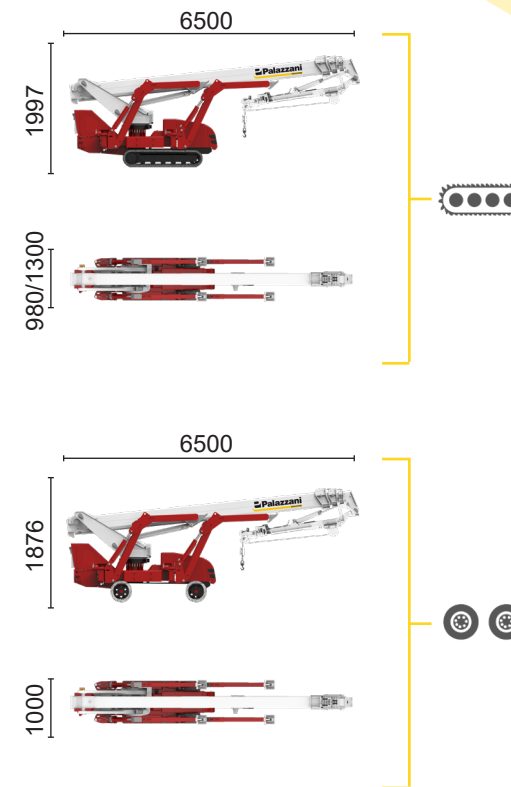
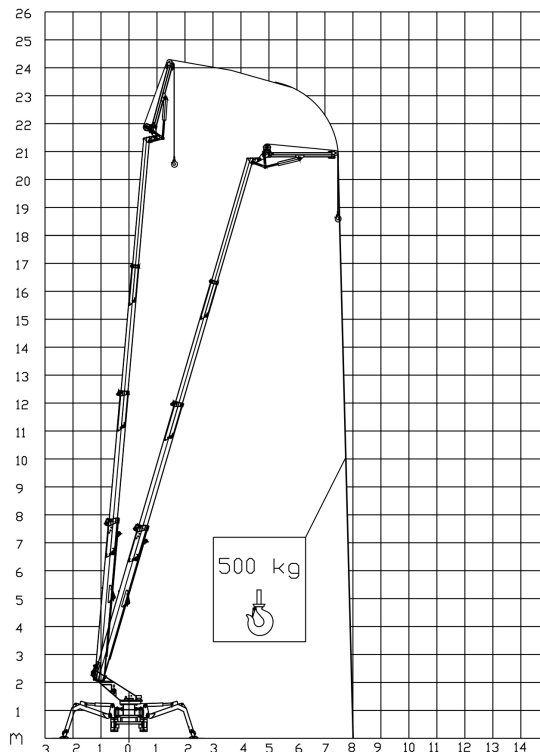
BI-ENERGY



Diesel
14,7 kW



Single-phase
Electric motor
230VAC - 2,2 kW



TSJ 25/C		23,5 m	8,5 m	500 kg	660°	180x70 cm	90°+80°	2,61-4,85 m	32%	36%	1 km/h	3950 kg	26 kN	1,64 kN/m ²	3,38 kN/m ²
TSJ 25/R		23,5 m	8,5 m	500 kg	660°	180x70 cm	90°+80°	2,61-4,85 m	32%	19%	1 km/h	3950 kg	26 kN	1,64 kN/m ²	3,38 kN/m ²

Available power options:

- BI-ENERGY** (DIESEL+AC)
- ECO** (AC+BATTERY)
- HYBRID** (DIESEL+AC+BATTERY)


Characteristics and technical data are informative only and subjected to change without notice.


Palazzani Industrie S.p.A.
Via del Pavione, 4 - 25050 - Paderno F.C. (BS) - Italy
Tel. (+39) 0306857073
info@palazzani.it
www.palazzani.it

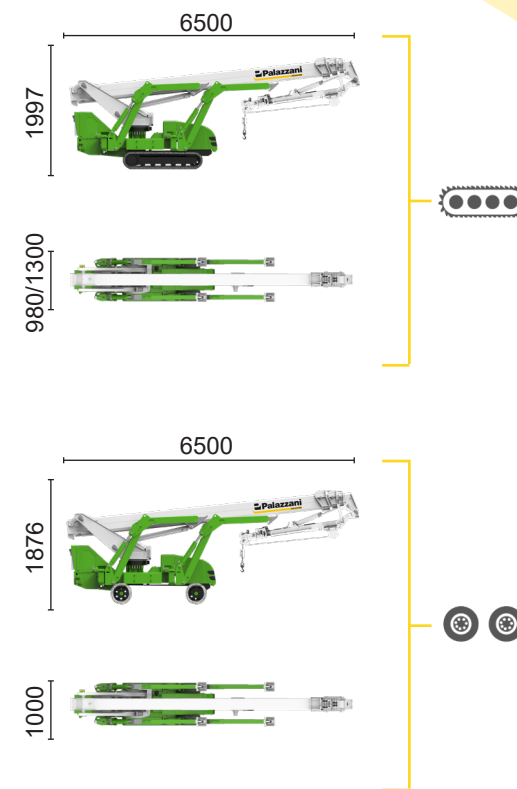
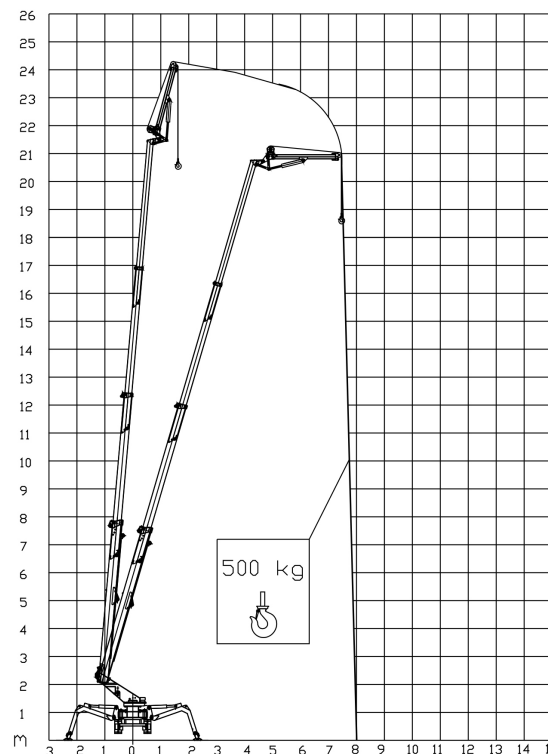






ECO

 Single-phase
Electric motor

 Lithium iron
phosphate battery
LiFePO4



TSJ 25/C		23,5 m	8,5 m	500 kg	660°	180x70 cm	90°+80°	2,61-4,85 m	32%	36%	1 km/h	3950 kg	26 kN	1,64 kN/m ²	3,38 kN/m ²
TSJ 25/R		23,5 m	8,5 m	500 kg	660°	180x70 cm	90°+80°	2,61-4,85 m	32%	19%	1 km/h	3950 kg	26 kN	1,64 kN/m ²	3,38 kN/m ²

Available power options:

- BI-ENERGY** (DIESEL+AC)
- ECO** (AC+BATTERY)
- HYBRID** (DIESEL+AC+BATTERY)




Characteristics and technical data are informative only and subjected to change without notice.

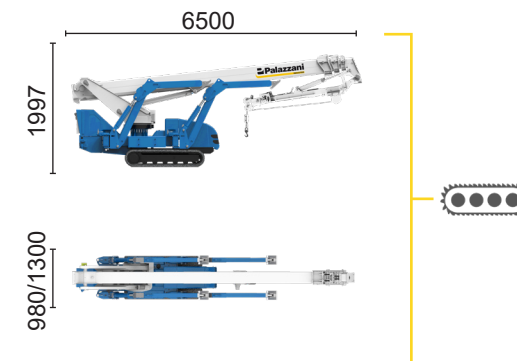
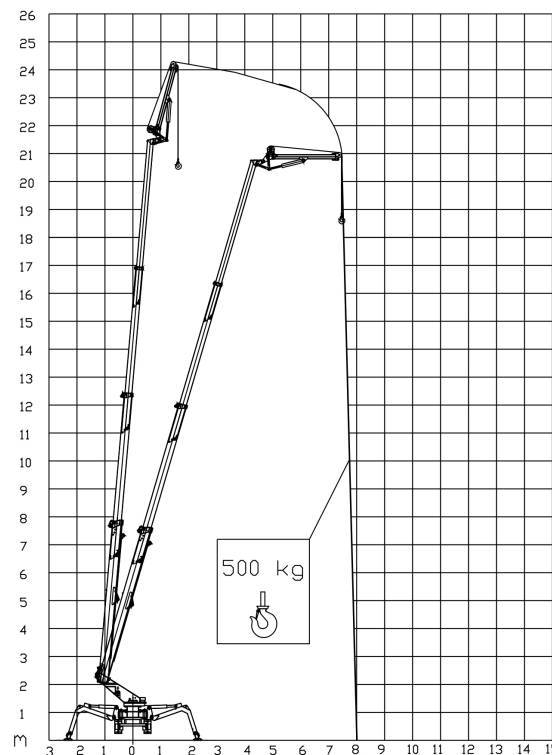
Palazzani Industrie S.p.A.
Via del Pavione, 4 - 25050 - Paderno F.C. (BS) - Italy
Tel. (+39) 0306857073
info@palazzani.it
www.palazzani.it




















HYBRID²

-  Diesel
14,7 kW
-  Single-phase
Electric motor
230VAC - 5,5kW
-  Lithium iron
phosphate battery
LiFePO4
48V - 210Ah



TSJ 25/C		 23,5 m	 8,5 m	 500 kg	 660°	 180x70 cm	 90°+80°	 2,61-4,85 m	 32%	 36%	 1,2 km/h	 4335 kg	 26 kN	 1,8 kN/m ²	 3,71 kN/m ²
----------	---	--	---	--	--	--	---	---	---	---	--	---	---	---	--

Available power options:

- BI-ENERGY** (DIESEL+AC)
- ECO** (AC+BATTERY)
- HYBRID²** (DIESEL+AC+BATTERY)

Characteristics and technical data are informative only and subjected to change without notice.

Palazzani Industrie S.p.A.
Via del Pavione, 4 - 25050 - Paderno F.C. (BS) - Italy
Tel. (+39) 0306857073
info@palazzani.it
www.palazzani.it

