



> Model 50.13 EN

**The boundless
powerhouse
without limits.**



Specifications

Model 50.13



Productivity

| | | | |
|------------------------|--------|---------------------------------|--------------|
| Working height: | 13,2 m | Continuous turntable rotation: | 360° |
| Platform height: | 11,2 m | Driving speed (transport mode): | 0 - 2,8 km/h |
| Horizontal reach: | 10 m | Driving speed (at height): | 0 - 1,4 km/h |
| Travel height: | 13,2 m | Gradeability: | 45% = 25° |
| Platform capacity: | 330 kg | Automatic bi-leveling: | 15° / 15° |
| Platform rotation: | 180° | | |
| Vertical jib rotation: | 180° | | |

Measurements

Machine

| | |
|-----------------------------------|-----------------------|
| Transport dimensions (l x w x h): | 4650 x 2200 x 2300 mm |
| Total mass without options: | 4850 kg |
| Ground clearance: | 350 mm |

Platform

| | |
|------------------------------------|----------------------|
| Standard - Dimensions (l x w x h): | 1800 x 800 x 1100 mm |
| Option 1 - Dimensions (l x w x h): | 1400 x 720 x 1100 mm |
| Optie 2 - Afmetingen (l x b x h): | 2400 x 800 x 1100 mm |
| Entry width: | 647 mm |
| Entry height: | 920 mm |
| Step in height: | 400 mm |

Mechanical

43 liter fuel tank capacity (ATD)
Fully proportional controls
Loadsensing hydraulic pump
2 speed track motors
Automatic proportional RPM controller

Safety Features

Approval for EN280 / CE
Tilt alarm
LED flashing lights on rear
Overhead safety crush prevention
Integrated weight system in platform
12V emergency lowering pump
Dual top railing on basket
Horn

Options

Available options on all models

Foldable load carriers on platform (70KG)
Extra screw trays
Holder for spray cans
Adjustable work lights on platform
4 x led work lights on main frame
Led flood light under platform
Non-marking rubber tracks (grey)
Water level holder in platform
Pail hanger in platform
Solar panel installation basket incl. load carriers and clamps
HY-Link portal communications, online diagnostics

Available options specific for ATD (Diesel)

Electric plug-in drive motor 230V / 380V
6,5 kVA-230V AC generator for power in platform

Available options specific for ATE (Electric)

10 kWh extra batteries
380V 3-phase charger for fast charging

Standard Hyrax colors

- Lashing and lifting points - Hyrax Red
 - Engine covers - signal white RAL 9003
 - All construction parts - black/grey RAL 7021
 - Work tray - Galvanized steel
- Custom color configurations possible

ATE

Fully lithium powered
20kWh / 30kWh battery packs

ATD^{e+}

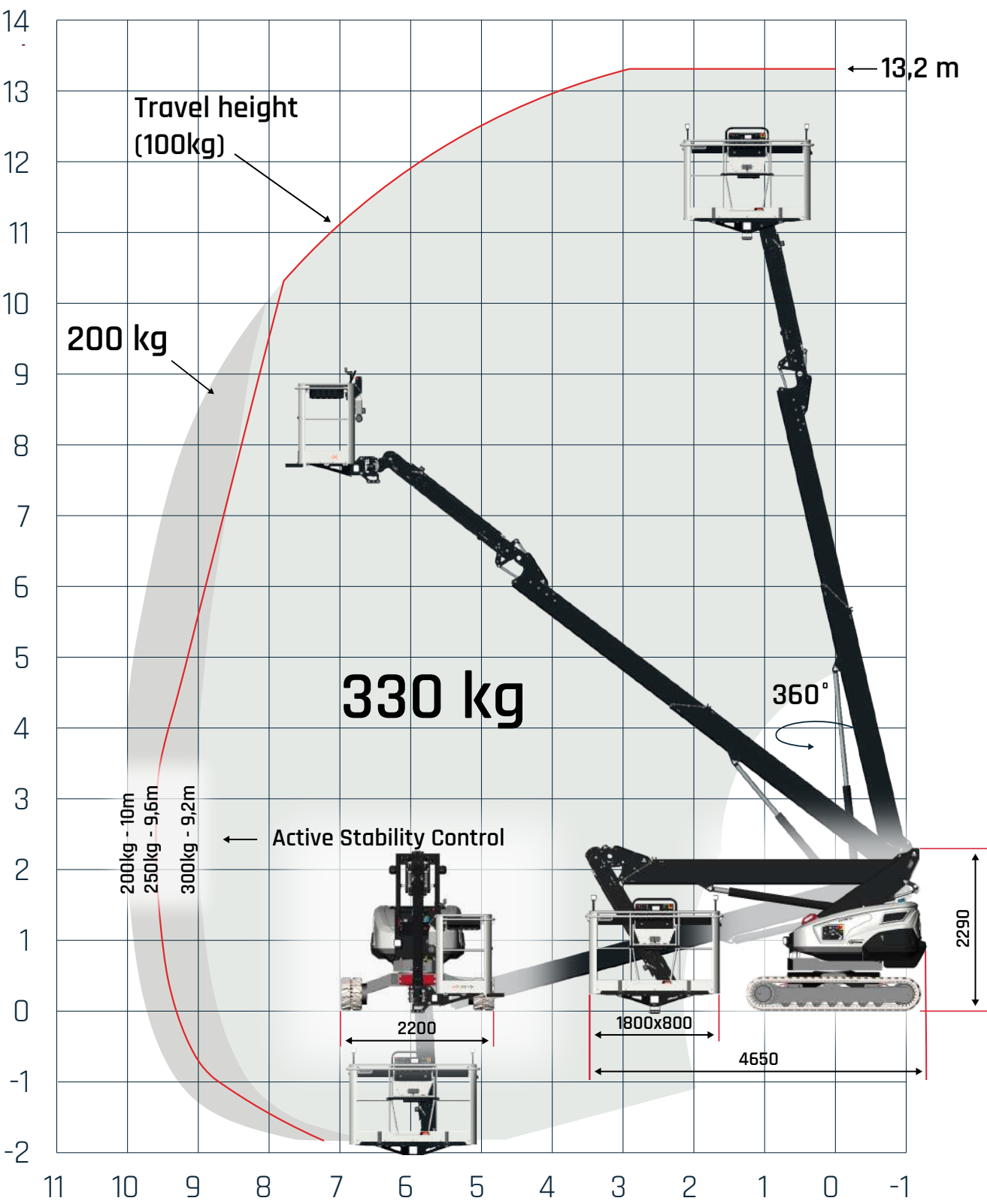
18,5kW 3 cil. Kubota diesel engine
Electric plug-in drive motor 380V

ATD

18,5kW 3 cil. Kubota
diesel engine

Diagrams

Working range



Hyrax Industries BV. has the policy to continuously improve their products.
Product specifications are subject to change without prior notice and can be changed without obligation.

Model 50.13

The rock

www.hyraxindustries.com



Heavy-duty design

With this 5 tons total weight you defy every construction site and nevertheless 4 machines fit on only 1 semi-trailer.



Working area

The fully automatic leveling system corrects slopes of up to 15° and remains drivable at full height.



Working load 330 kg

Built for teamwork: 3 people, in addition to their equipment.



Work at 13.2 meters

Work stable at 13.2 meters working height and 10 meters of outreach.

HYRAX
AERIAL LIFTS

Pushing the limit >>>>