

EVO 205 DT

EXPERIENCE THE EVOLUTION

 **GreenMech**



Model shown with optional
Lighting Tower, Tool Box,
Split Folding Discharge
Chute & Winch.

When we launched **EVO 165**, we said...

WE LISTENED, WE WORKED & WE MADE IT AWESOME

In order to produce the 6.5 inch chipper
the industry was looking for.

- ▶ **MORE** AGGRESSIVE TORQUE
- ▶ **MORE** AGGRESSIVE BITE
- ▶ **MORE** THROUGHPUT

Customers tell us we've achieved those
objectives and now we've turned our
attention to **EVO 165's** Big Brother -
EVO 205 - using all our experience to
develop an exceptional 8 inch tracked
machine.

SEE FOR YOURSELF

FEATURES & BENEFITS

INFEED AREA:

► WIDE IN-FEED CHUTE

Reduces the time needed with the saw and helps prevent inadvertent triggering of the safety bar when feeding in wide branches.

► LETTER BOX SHAPED IN-FEED THROAT

Offers the advantage of getting the forked material into the processor before bridging the sides of the throat.

► HORIZONTAL ROLLERS

Gather and grip the material while offering a smooth flow into the processor with reduced lateral movement.

► PIVOTALLY -MOUNTED TOP ROLLER

Allows for free movement of timber, offered at different angles, without jamming.

► MANUAL ROLLER LIFT

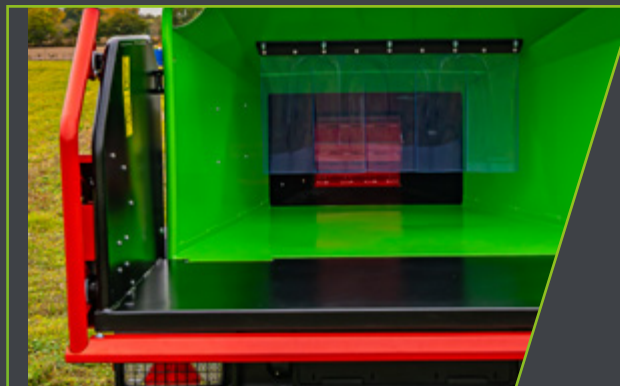
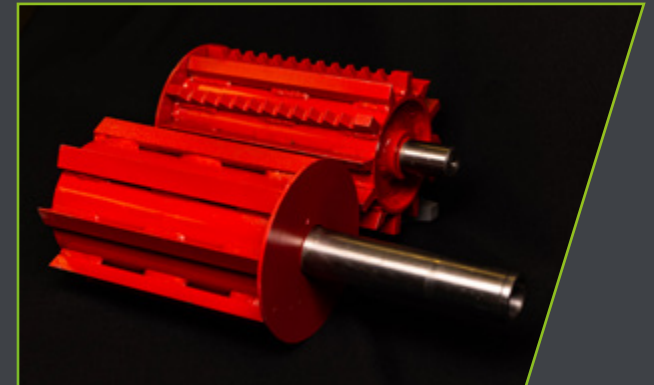
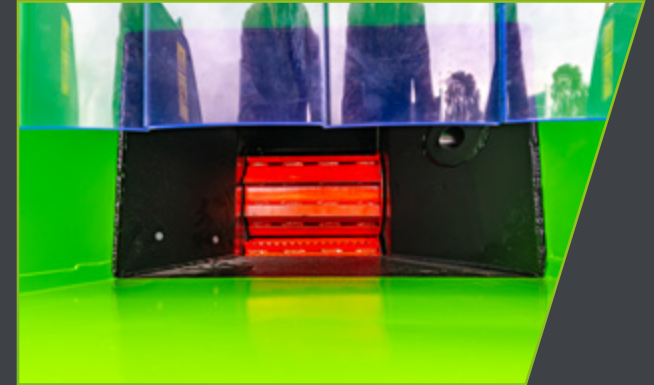
The top roller pivot arm has a port to accommodate a bar, allowing the roller to be manually lifted to gain clearance if required.

► FLOATING SAFETY BARS

Offers equalised pressure on all touch points of the bar and, with the new style bottom bar, helps reduce nuisance tripping.

► FOLDING INFEED CHUTE

Gives a shorter overall length for storage.



FEATURES & BENEFITS

CONTROLS:

► NEW "SMART SENSE" CONTROLLER

Provides "no-stress" overload protection, automatic load detection and a range of engine and chipper data to ensure optimum performance.

► RESET/ REVERSE BUTTONS

Conveniently placed on each side of the infeed chute.

► ELECTRONIC THROTTLE BUTTON

Placed with the reset and reverse controls, one press of the yellow button will bring the engine either up to working speed or down to idle.

► FLOW REDUCTION VALVE (FRV)

Allows the operator to regulate the flow of material into the machine and to adjust the chip size.

► TRACK & CHIP SWITCH

Console switch ensures machine is either tracking or chipping, so minimising the risk of any accidental operation.

► MANUAL CLUTCH

Used to engage and disengage the flywheel .



FEATURES & BENEFITS

CHIPPING:

► HEAVY FLYWHEEL

At 126kg, the new flywheel offers unparalleled processing power for a machine of its size.

► DISC BLADE TECHNOLOGY

With 6 disc blades per flywheel, their slicing action makes the blades more tolerant to the occasional contaminant that can get into the system and offers an expected life of over 900 hours per set.

► OVERSIZE GREASE-ABLE FLYWHEEL/ DISC BEARINGS

Offers prolonged use of machine without the worry of bearing failure.

► ADJUSTABLE END CAP

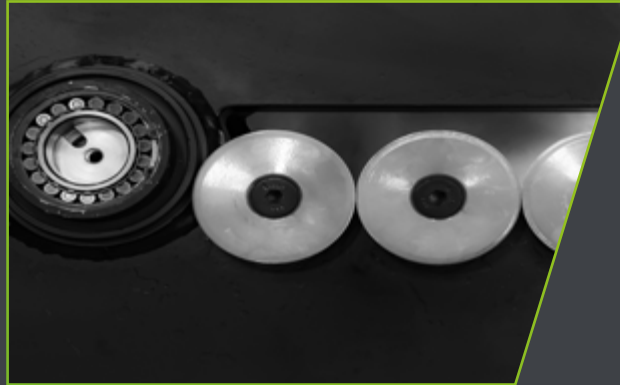
End cap can be adjusted to direct material out of the discharge chute, increasing or decreasing throw.

► ADJUSTABLE DISCHARGE CHUTE

280 degree rotation allowing the user to place processed material in a given location.

► SHARPEN YOUR OWN DISCS

With GreenMech's easy-to use disc blade sharpener.



FEATURES & BENEFITS

POWER & TRACKS:

► COMPLIANT DIESEL ENGINE

The Stage V Kubota 50hp diesel engine provides all the power you'll need and, in combination with the "Smart Sense" controller, optimises your fuel consumption.

► 118 DB SOUND POWER / 91 DB SOUND PRESSURE

The hinged steel bonnet is lined with noise reduction material which, in combination with the disc blade system, offers one of the quietest wood chippers on the market.

► FIXED TRACKS

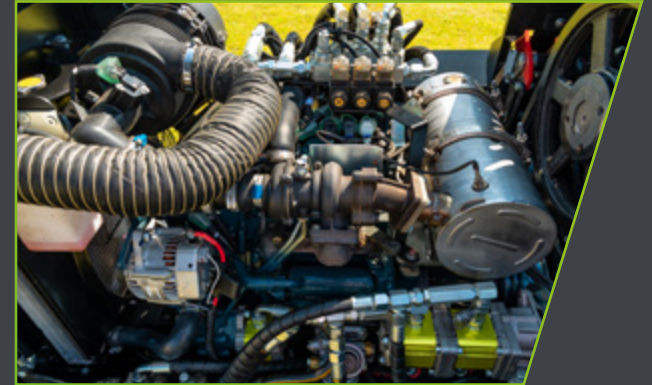
The independently pivoting track assemblies allow each track to maintain contact with the ground while following the differing contours and so provide a surer footprint and improved stability. Tracks can be extended and retracted while on the move.

► TWIN TRACK DRIVE

Each track has its own drive motor for improved security and reliability and together provide a tracking speed of 3kph.

► GROUND CLEARANCE

Clearance of 260mm with the tracks in helps access to sites over demanding terrain.



FEATURES & BENEFITS

MAINTENANCE:

► BLADE MAINTENANCE

Improved access to the flywheel and the special locking system allows for safe and easy maintenance.

► CENTRALISED GREASE POINTS

All the major grease points in one location making regular servicing easy.

► EASE OF SHEAR BAR ACCESS

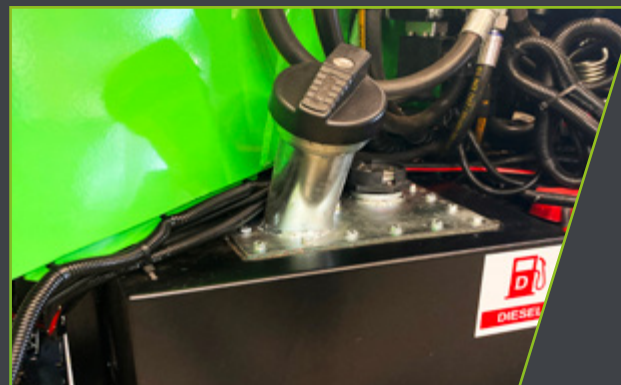
We have designed the Evo 205D to offer good access to both the vertical and horizontal shear bars.

► ONE PIECE STEEL BONNET

The all-steel, one piece, hinged bonnet allows for strength and durability and offers great access.

► UNDERSLUNG TANKS

Metal cased for added protection, Integral gauges offer an “at a glance” view on fuel and hydraulic oil levels.



FEATURES & BENEFITS

OPTIONAL EXTRAS:

► WINCH

Located underneath the in-feed chute with full remote control functions.

► ELECTRIC EMERGENCY RECOVERY KIT

Provides enough power to move the machine in the unlikely event of engine failure.

► REMOTE CONTORL

Full remote control unit available for operating the machine tracks from a distance.

► TOOL BOX

Can be located on either side of the machine with lockable eyelets for safe storage of tools & remote controls.

► FOLDING DISCHARGE CHUTE

Ideal when storage and access heights are restrictive.



SPECIFICATIONS

EVO 205_{DT}

CAPACITY	205mm
ENGINE MAKE	Kubota D 1803-CR-TE4B
ENGINE OUTPUT	50hp
FUEL	Diesel
CHIPPING FLYWHEEL	Disc Type
FLYWHEEL SPEED	1450 rpm
BLADES	6
HYDRAULIC FEED ROLLERS	Twin Horizontal
POWER CONTROL	No Stress
FUEL CAPACITY (ENGINE)	50 litres diesel
GROUND CLEARANCE	540mm Max / 250mm Min
TRACK SPEED	3kph
TONNES PER HOUR	7
INFEED CHUTE APERTURE	700mm x 1250mm
INFEED THROAT SIZE	205mm x 270mm
DISCHARGE CHUTE	280 degrees rotation
HYDRAULIC OIL CAPACITY	50 litres
HOUR METER	Standard
LENGTH	3860mm Max / 3020mm Min
WIDTH	2356mm Max / 1550mm Min
HEIGHT	2760mm Max
WEIGHT	1700kgs
SOUND POWER LWA	118
SOUND PRESSURE LPA	91dB(A)

SUPPORT & FINANCE

3 YEAR
WARRANTY
AS STANDARD

WARRANTY:

GreenMech offers an industry-leading 3 year unlimited, “no quibble” Parts and Labour warranty.

**NATIONWIDE
DEALER
NETWORK**

NATIONWIDE DEALER NETWORK:

GreenMech supports its UK customers via an unrivalled network of dealers, providing local knowledge and expertise in both sales and aftersales areas.

**GREENMECH
FINANCE**

FINANCE:

GreenMech Finance can provide a package of finance options to UK customers to maximise their investment and optimise their cash flow.



The Mill Industrial Park, Kings Coughton, Alcester B49 5QG

01789 400 044 www.greenmech.co.uk

FOLLOW US

